

Primrose Avenue Romford, RM6 4PS

Edward Chase are pleased to present this stunning three bedroom house located within the ever-popular residential area of Chadwell Heath, RM6. The property consists of a large through lounge reception, modern fitted kitchen, ground floor shower room, three bedrooms, first floor bathroom, garden and driveway parking. The property is decorated to a high standard with modern gloss finish wardrobes within the bedrooms as well as a fitted media storage unit within the reception area. The property available immediately for working professionals and families looking for a spacious long term home. Property key features; - 3 bedroom house - 2 bathrooms - Through-lounge reception - Fitted kitchen - White goods included - Garden - Driveway parking - Wood flooring on ground floor - Gas central heating - Double glazed throughout - Fitted wardrobes in bedrooms - Decorated to a high standard - Available now - Rear storage not included Please call Edward

- Modern Three Bedroom House Located Within Chadwell Heath, RM6
- Fitted Wardrobes Within The Bedrooms
- Driveway Parking For Two Cars
- Property Is Available Now And Is Perfect For Long Term Rental
- The Property Is Decorated To High Standard Throughout
- Provided Part-Furnished, Including White Goods Within The Kitchen
- Short-Walk To Goodmayes Retail Park Providing Access To Great Amenities Such As Tesco And Costa

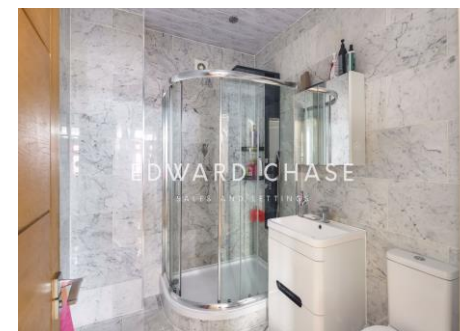
Monthly Rental Of £1,899

Primrose Avenue Romford, RM6 4PS

Monthly Rental Of £1,899

Edward Chase are pleased to present this stunning three bedroom house located within the ever-popular residential area of Chadwell Heath, RM6. The property consists of a large through lounge reception, modern fitted kitchen, ground floor shower room, three bedrooms, first floor bathroom, garden and driveway parking. The property is decorated to a high standard with modern gloss finish wardrobes within the bedrooms as well as a fitted media storage unit within the reception area. The property available immediately for working professionals and families looking for a spacious long term home. Property key features; - 3 bedroom house - 2 bathrooms - Through-lounge reception - Fitted kitchen - White goods included - Garden - Driveway parking - Wood flooring on ground floor - Gas central heating - Double glazed throughout - Fitted wardrobes in bedrooms - Decorated to a high standard - Available now - Rear storage not included Please call Edward Chase Estate Agents to attend the next available viewing.

Lettings Edward Chase estate agents offer a bespoke, professional, ARLA accredited Lettings & Management service. If you would like a free property appraisal to gauge the rental potential of your property or you are considering a buy to let purchase, please feel free to contact Sukhbir Basra, Branch Manager to arrange an appointment. Edward Chase estate agents specialize in Ilford, Redbridge, Seven Kings, Goodmayes, Chadwell Heath, Newbury Park, Barkingside, Chadwell Heath, Barking, Canary Wharf, Docklands, Romford, Chigwell, Dagenham, Newham, Royal Wharf and the surrounding East London vicinity. Edward chase estates agents Lorimer Village, Goodmayes site.



Score	Energy rating	Current	Potential
92+	A		
81-91	B		
69-80	C		71 C
55-68	D		
39-54	E	51 E	
21-38	F		
1-20	G		

MONEY LAUNDERING REGULATIONS 2003

Intending purchasers will be asked to produce identification and proof of financial status when an offer is received. We would ask for your co-operation in order that there will be no delay in agreeing the sale.